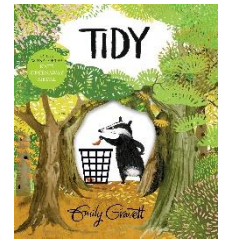


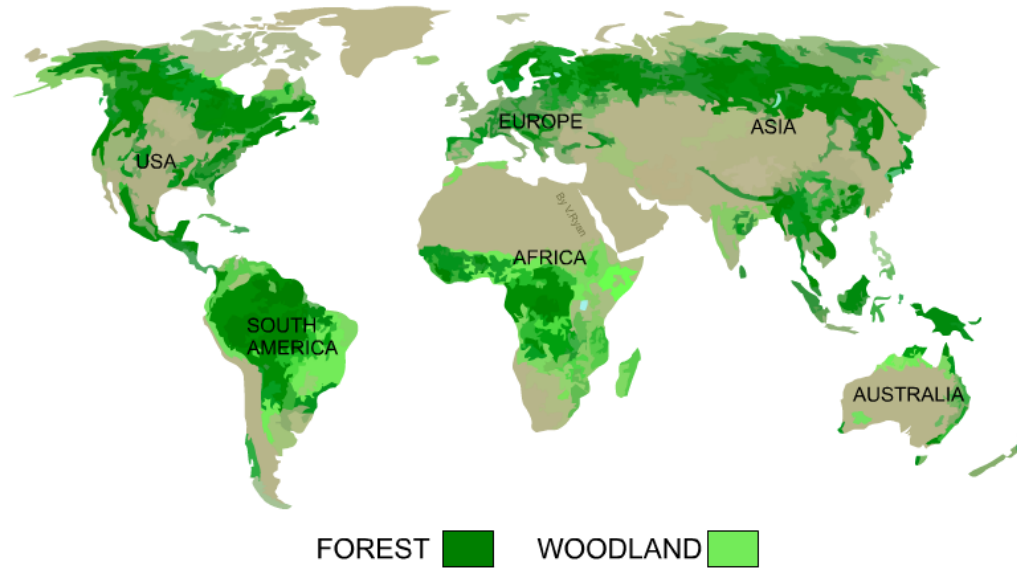
Eling Infant School Knowledge Organiser: Forests



Facts about Forests

Our learning around forests will focus on where they are and how they differ, in relation to the equator. Forests cover 30% of the earth's surface but provide habitat for more than 50% of the animals in the world. However, they are being destroyed or damaged at an alarming rate. Our trip to Bolderwood will give us some inspiration on how we can care and nurture our local forests.

Forests around the World



Tidy by Emily Gravett - Story Synopsis

Deep in the forest lives a badger called Pete with an obsession for tidying up. Pete tidies up the leaves as they fall from the tree, then he tidies up the trees themselves. When that causes a flood, he sets to deal with the mud too. Tidying up mud leads to putting down concrete. But then, how can Pete ever get back into his own home? Pete realises he may need to put everything back!

Forest



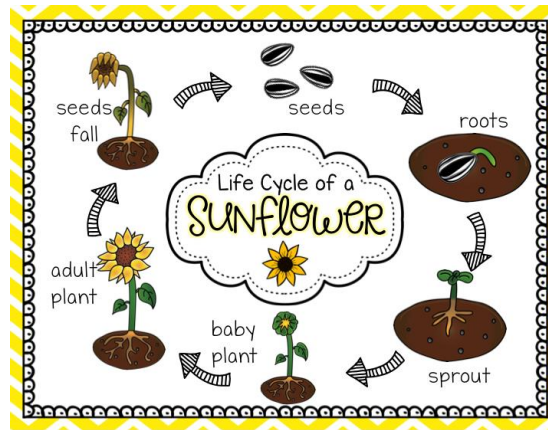
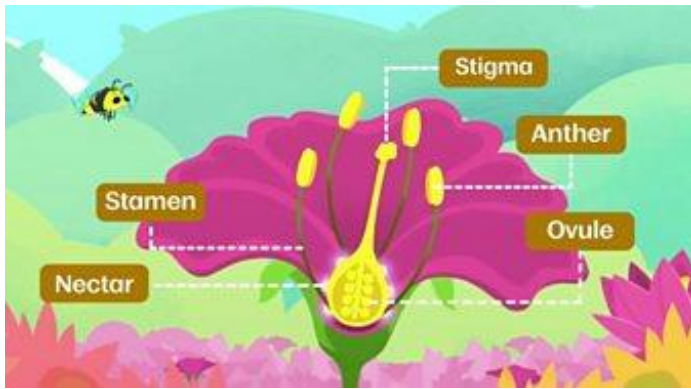
Rainforest



Deforestation



Science - Plant Reproduction



Key Vocabulary

Forest – A large area filled with many trees and other plants.

Rainforest – A highly built up forest, usually found in tropical areas with high rainfall.

Deforestation – The clearing or cutting down of forests.

Equator – An imaginary line that divides the earth into two halves.

Climate – The average measurements of temperature, wind, humidity, snow and rain in a place over the course of years.

Vegetation – The plant life that covers a certain area.

Humid – When the air is very damp, moist and hot. The climate of a rainforest is very humid.

Habitat – A place where an animal lives.

Micro-habitat – A very small part of a larger habitat for extremely small creatures.

Evergreen – A plant that has leaves that stay green throughout the year.

Deciduous – A plant that loses its leaves, usually in Autumn.

Microhabitats and Minibeasts

Here are some different microhabitats you might have found in the local environment.



Under stones and rocks.



In short grass.



Inside rotting wood.



Under fallen leaves.



In and on the soil.



In tall grass and flowers.

Rainforests - Tree Layers

